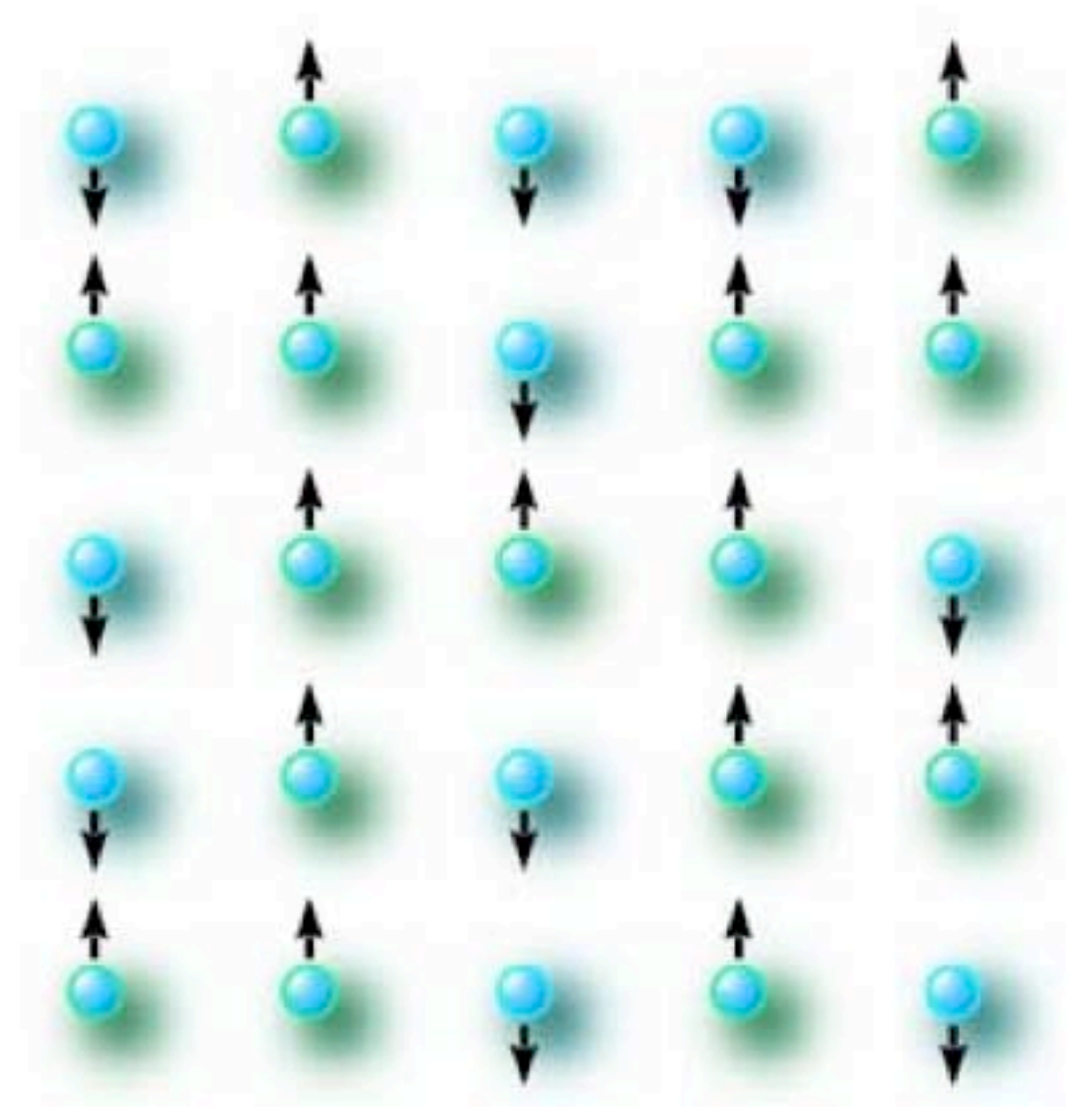


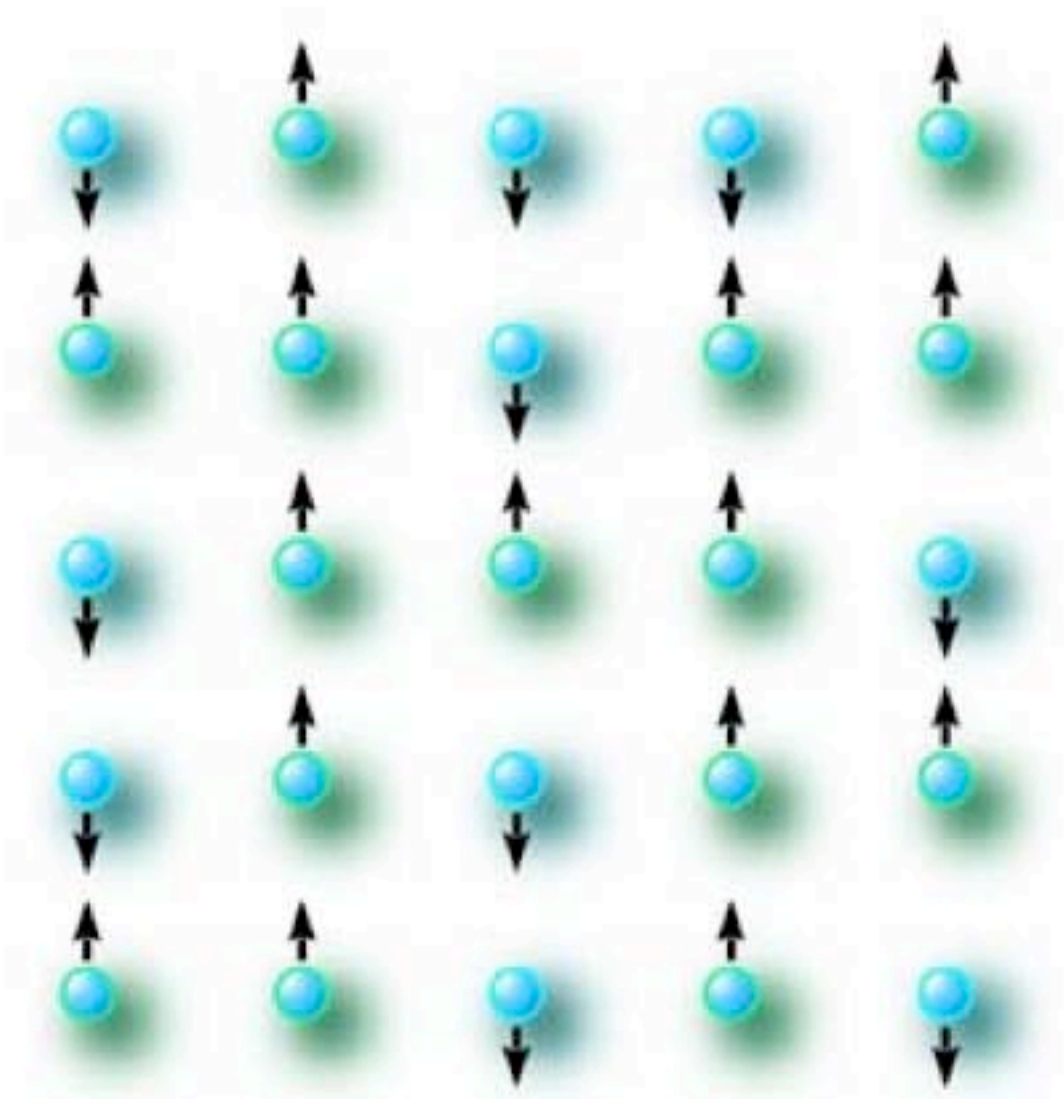


**What is creativity?**

Science is all about the  
flow of ideas

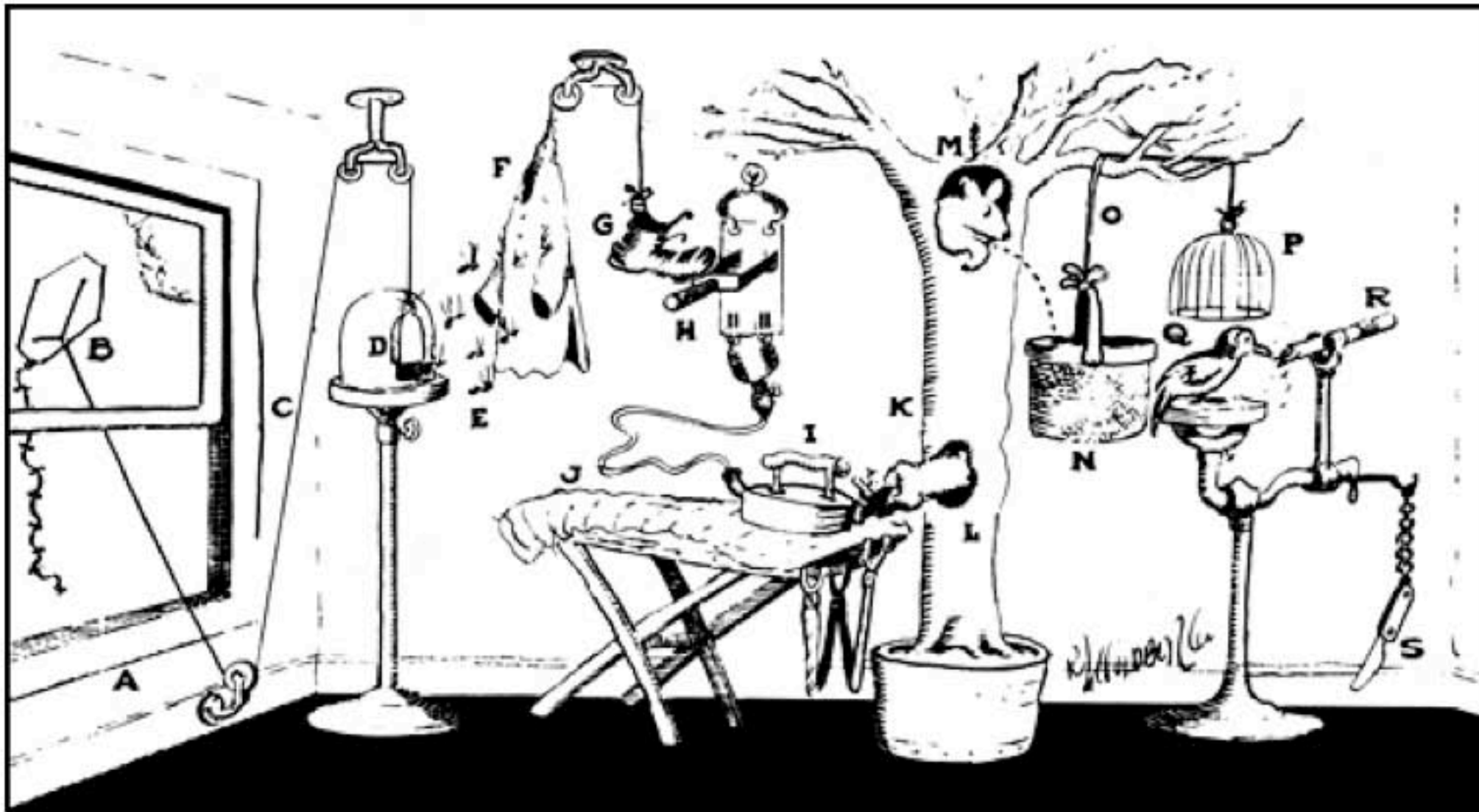
Interchangeable  
components





Regular structure





Rube Goldberg, "A simplified pencil sharpener"

Pairwise

Sequential

Purposeful

A misty forest scene with a large tree trunk on the left and dense green foliage in the background. The text is overlaid on the right side of the image.

differentiated  
multipartite  
integrated  
dynamic

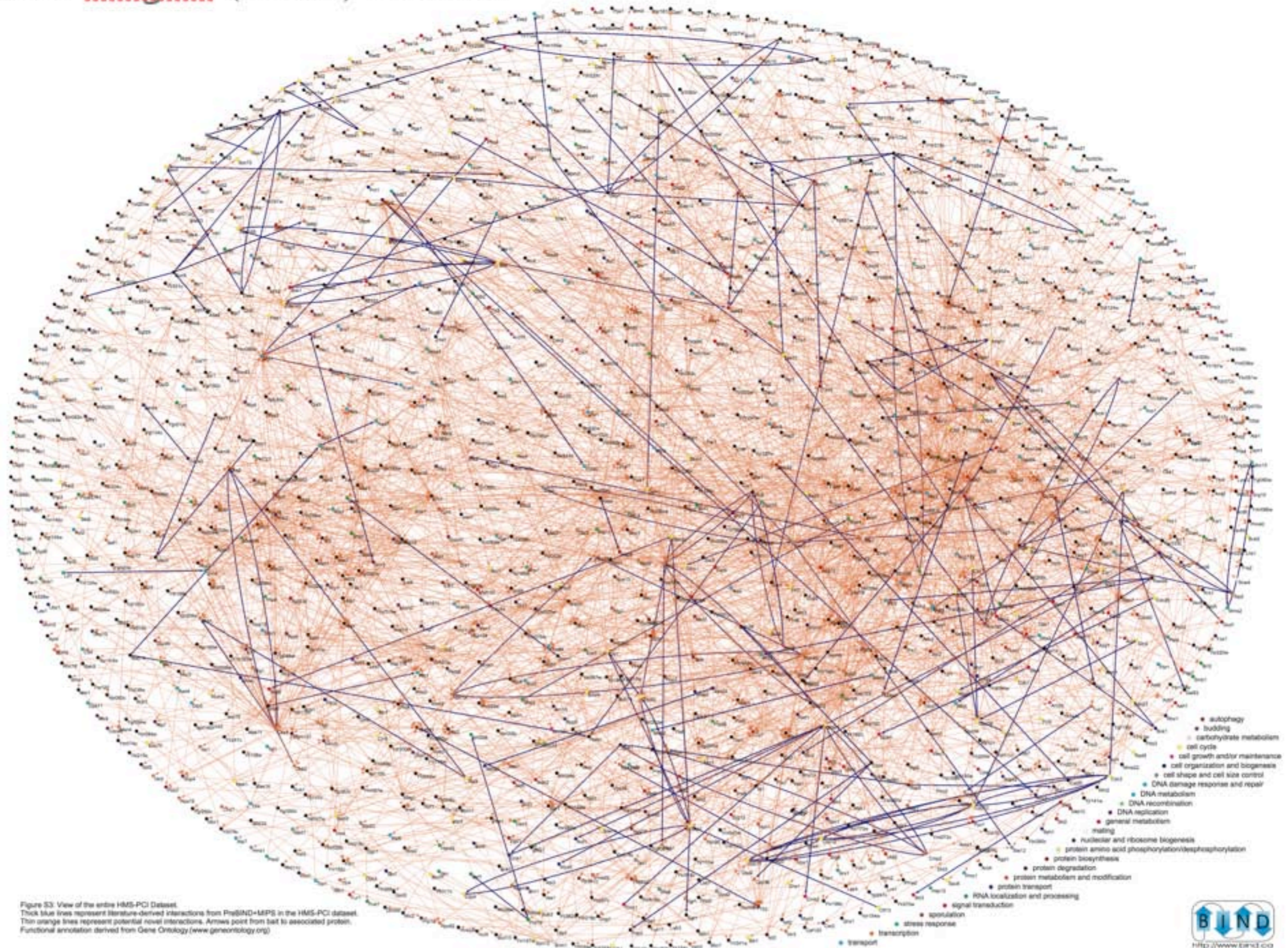


?

**Networks.**

# Yeast protein interaction network

Bader and Hogue (2002) Nature



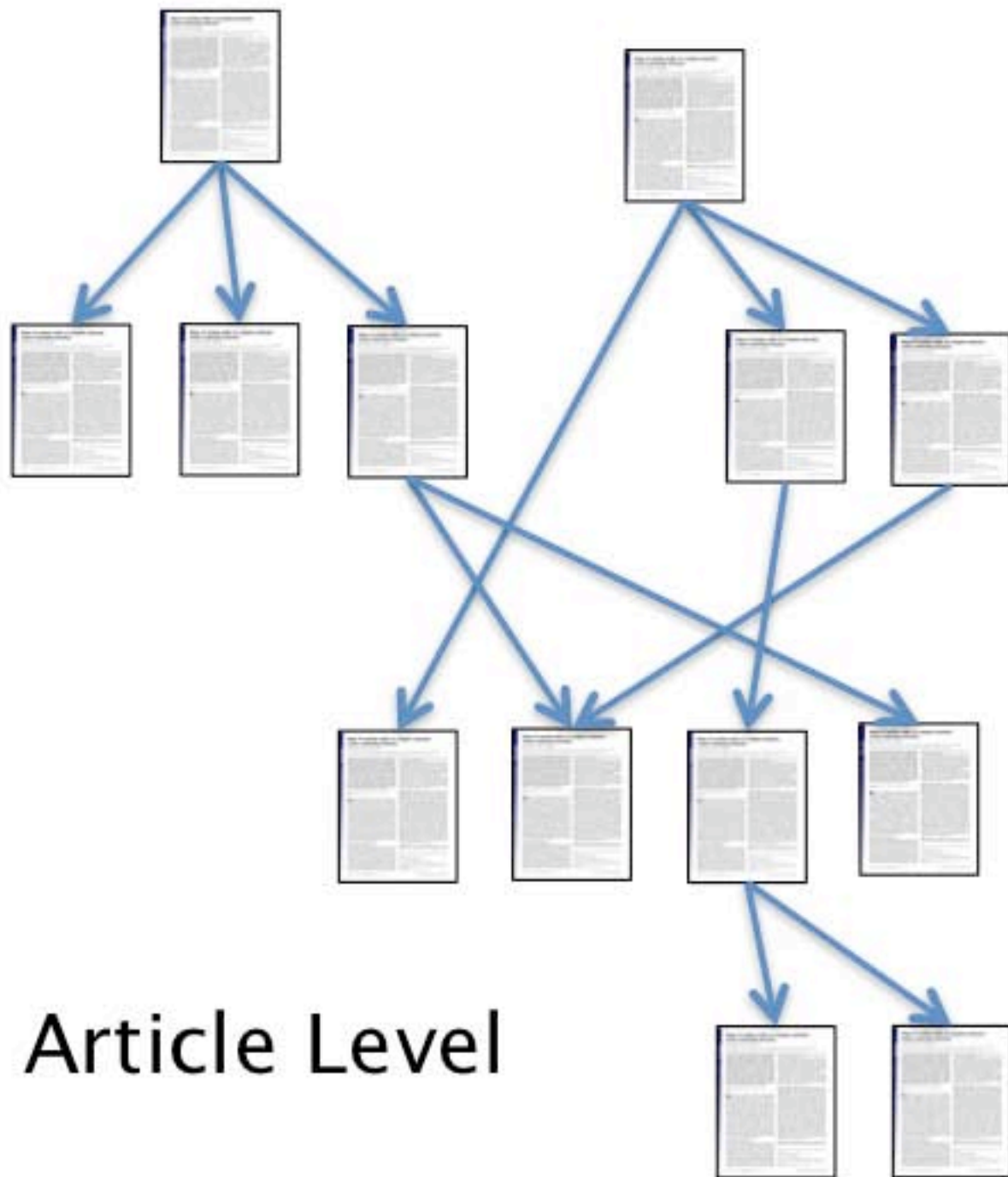




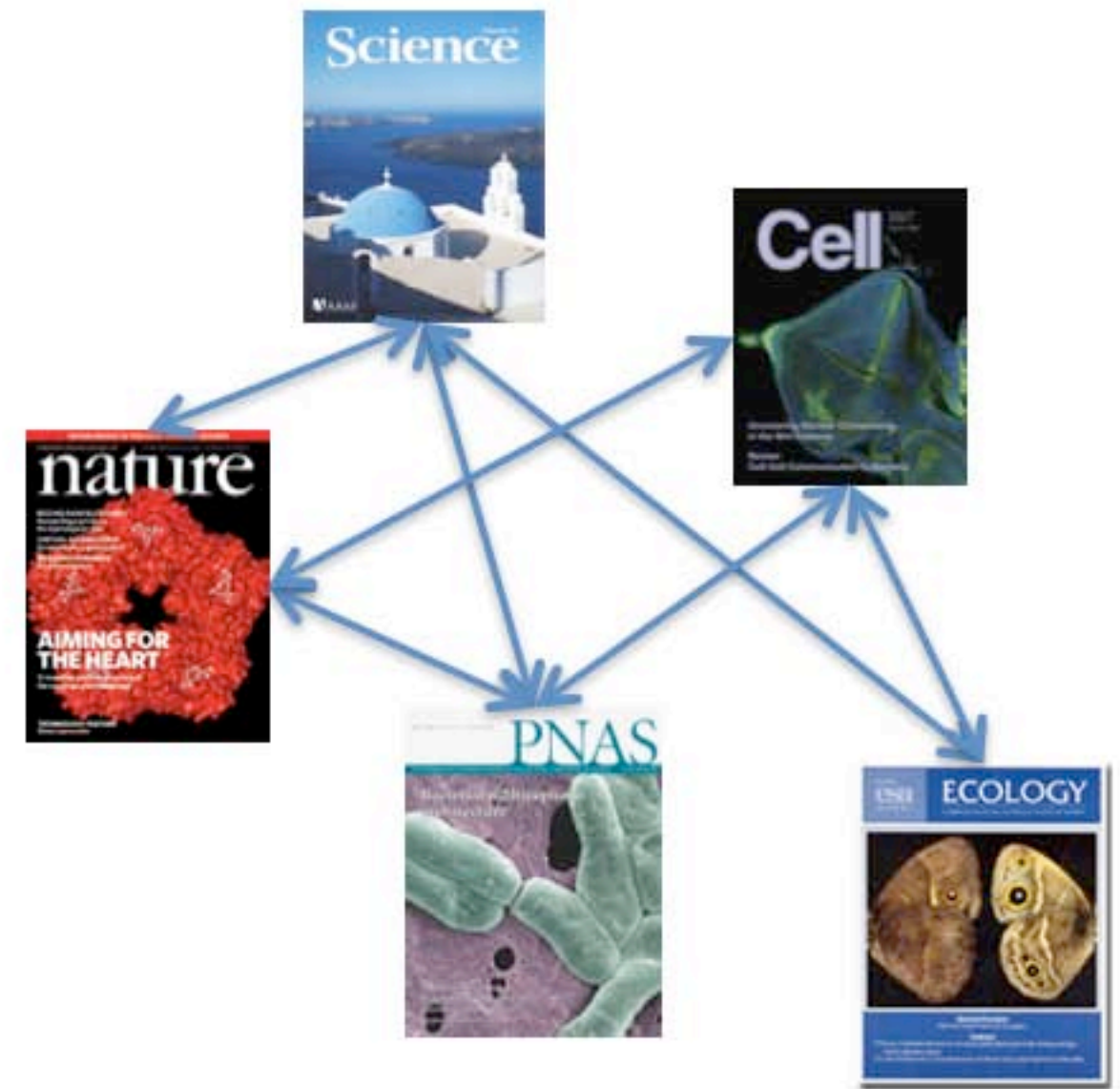
**simplify**



# Citation Networks



Article Level



Journal Level



**ISI** Web of  
**SCIENCE.**

*Powered by ISI Web of Knowledge<sup>SM</sup>*



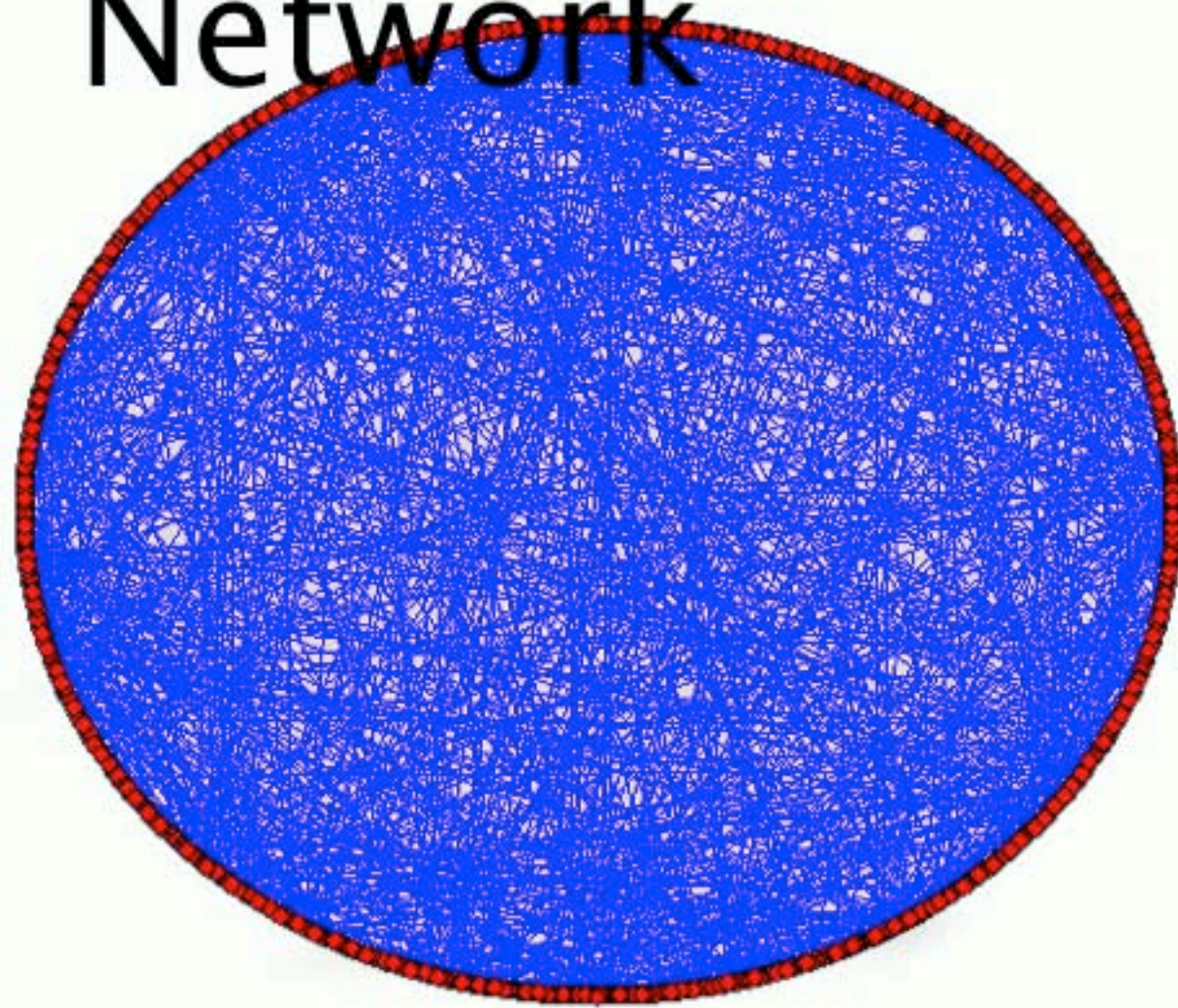
## Thomson Scientific Journal Citation Reports 2004

~ 7,000 journals

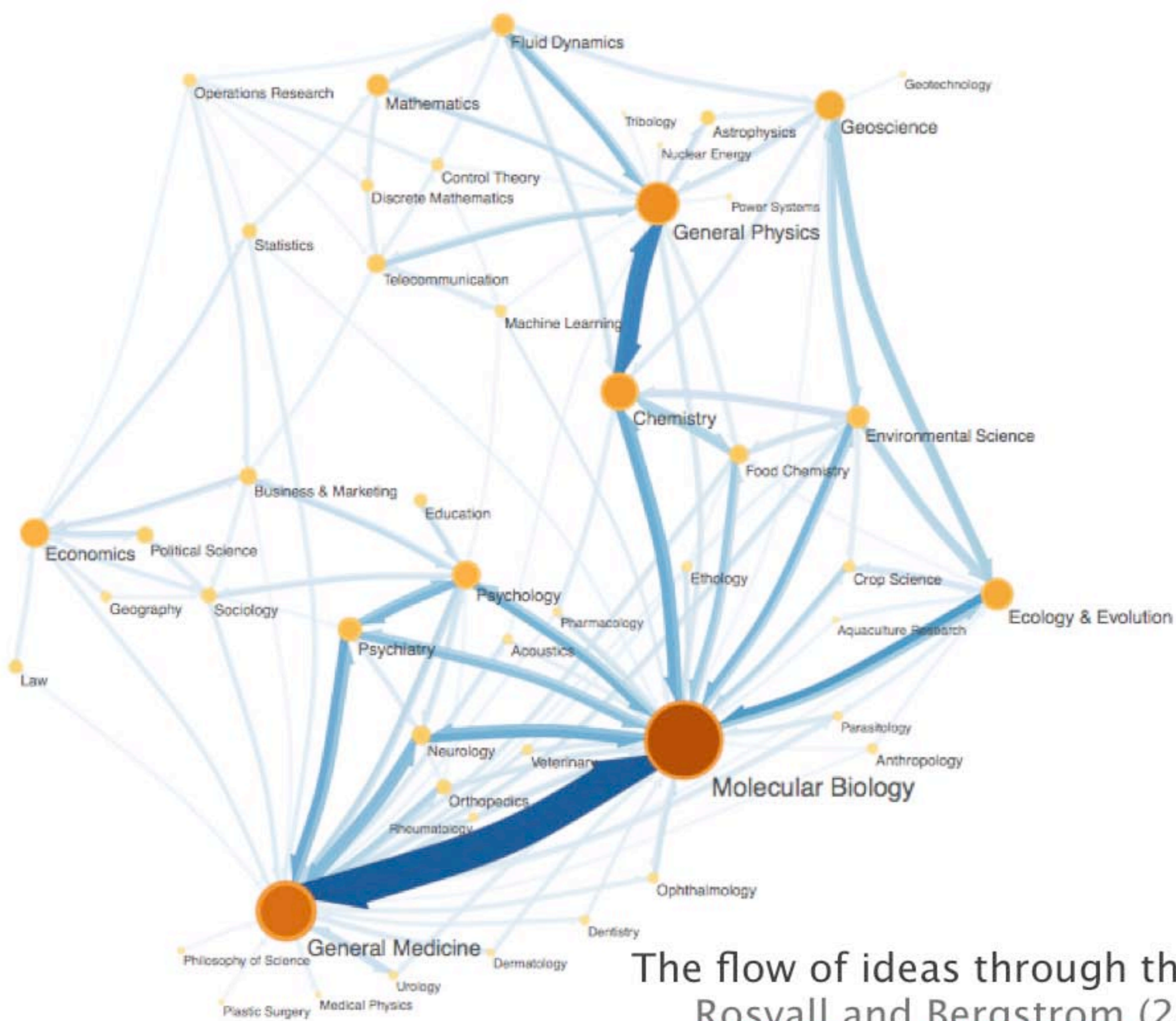
> 6,000,000 citations



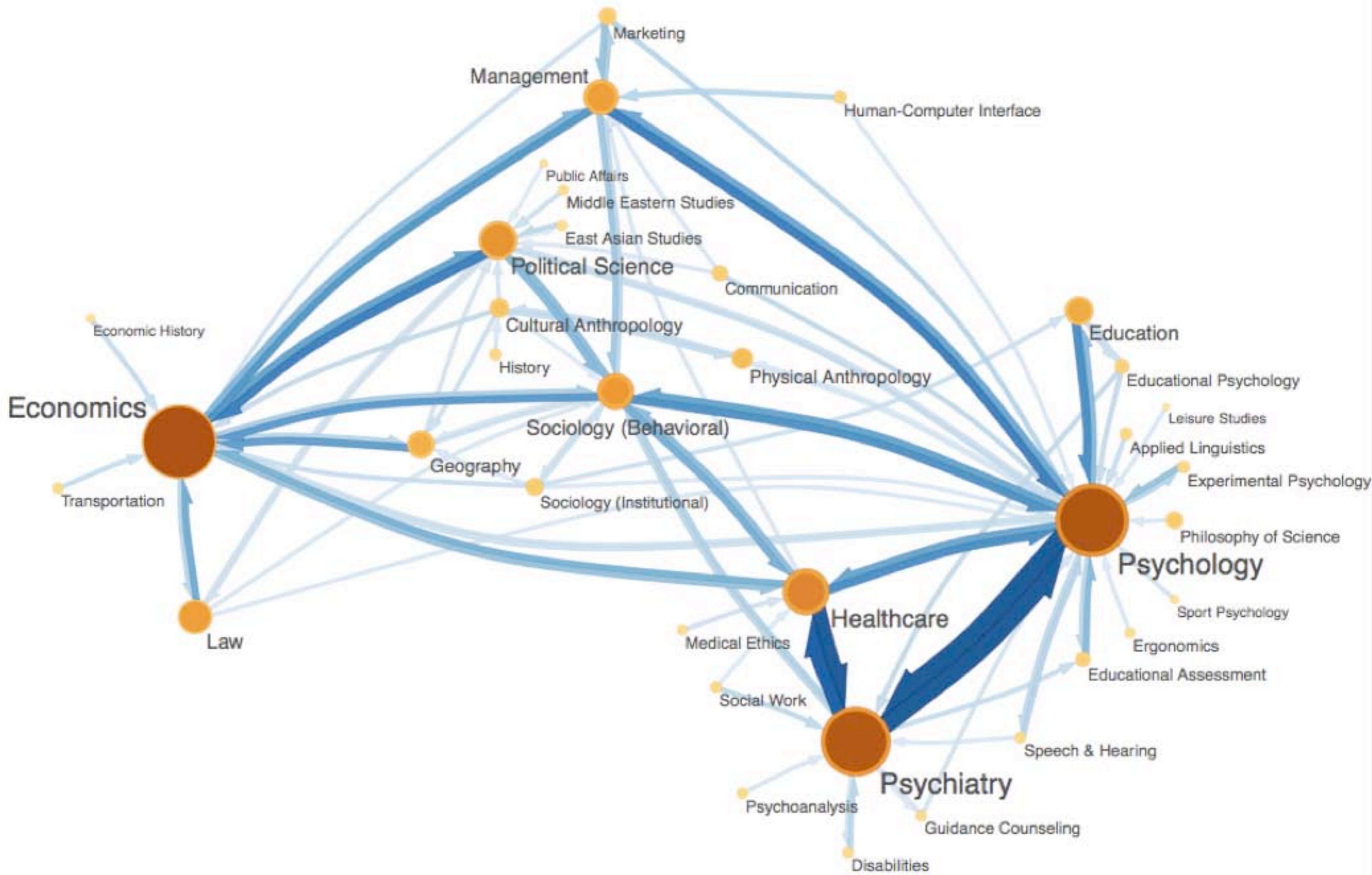
# Citation Network

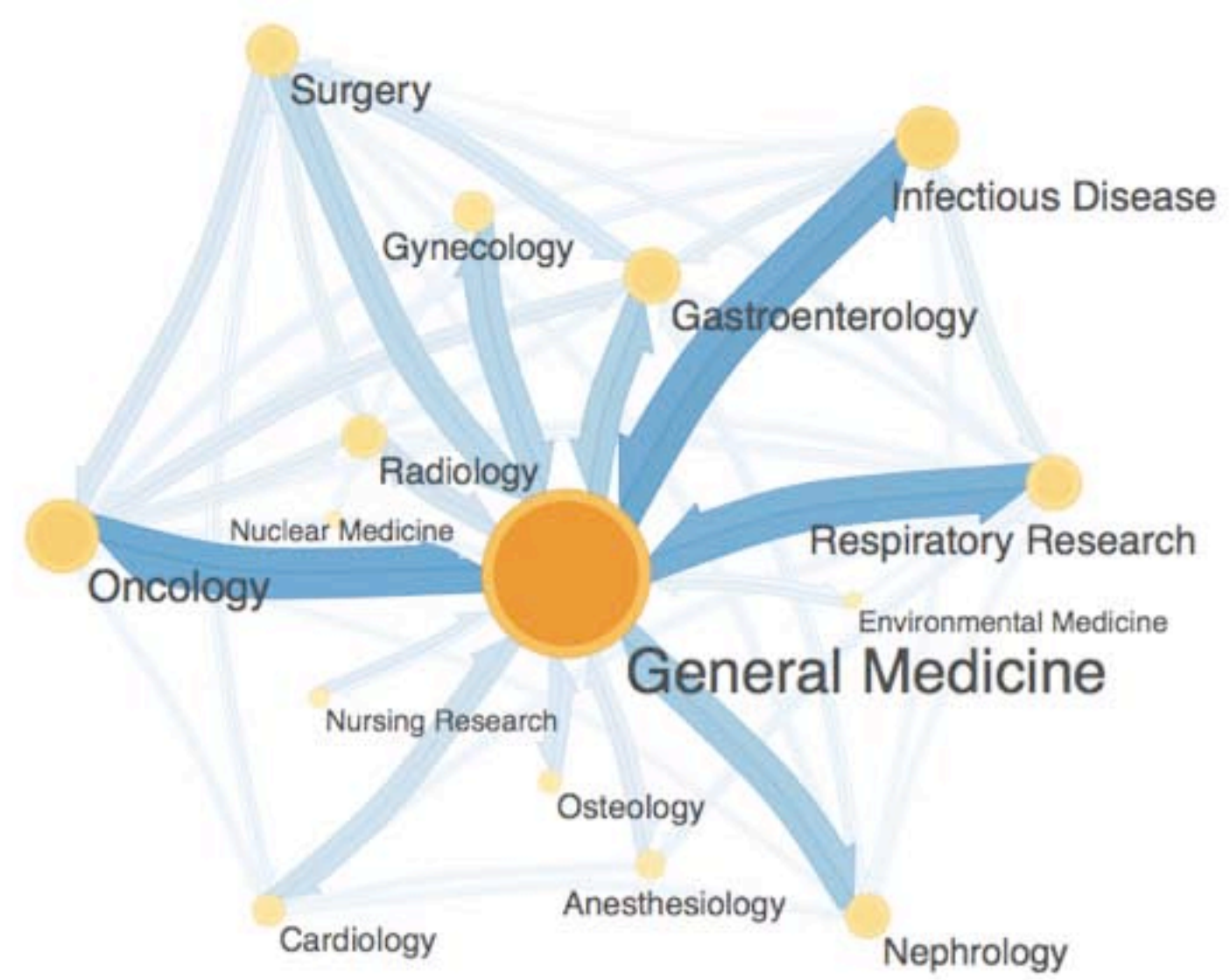
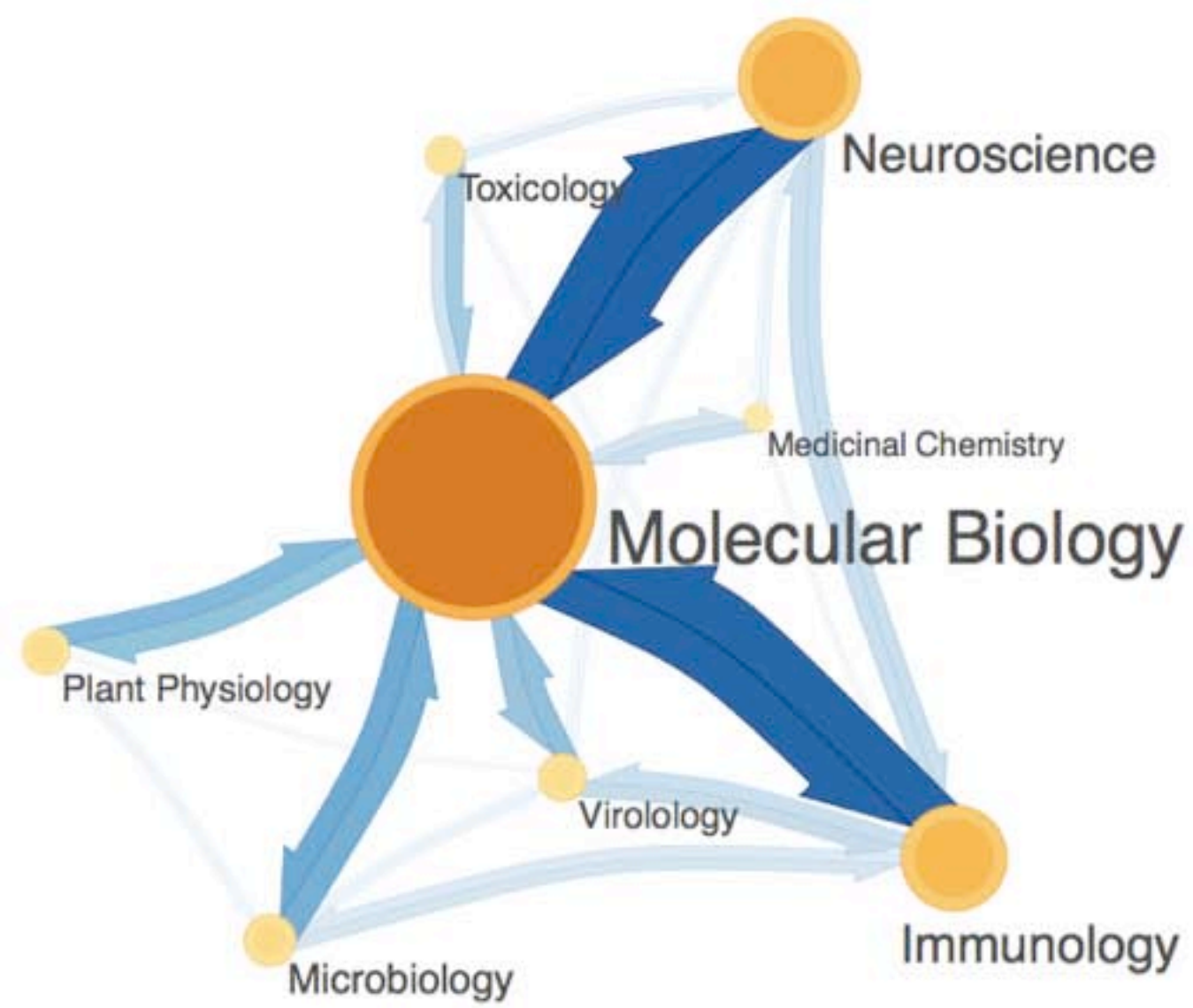


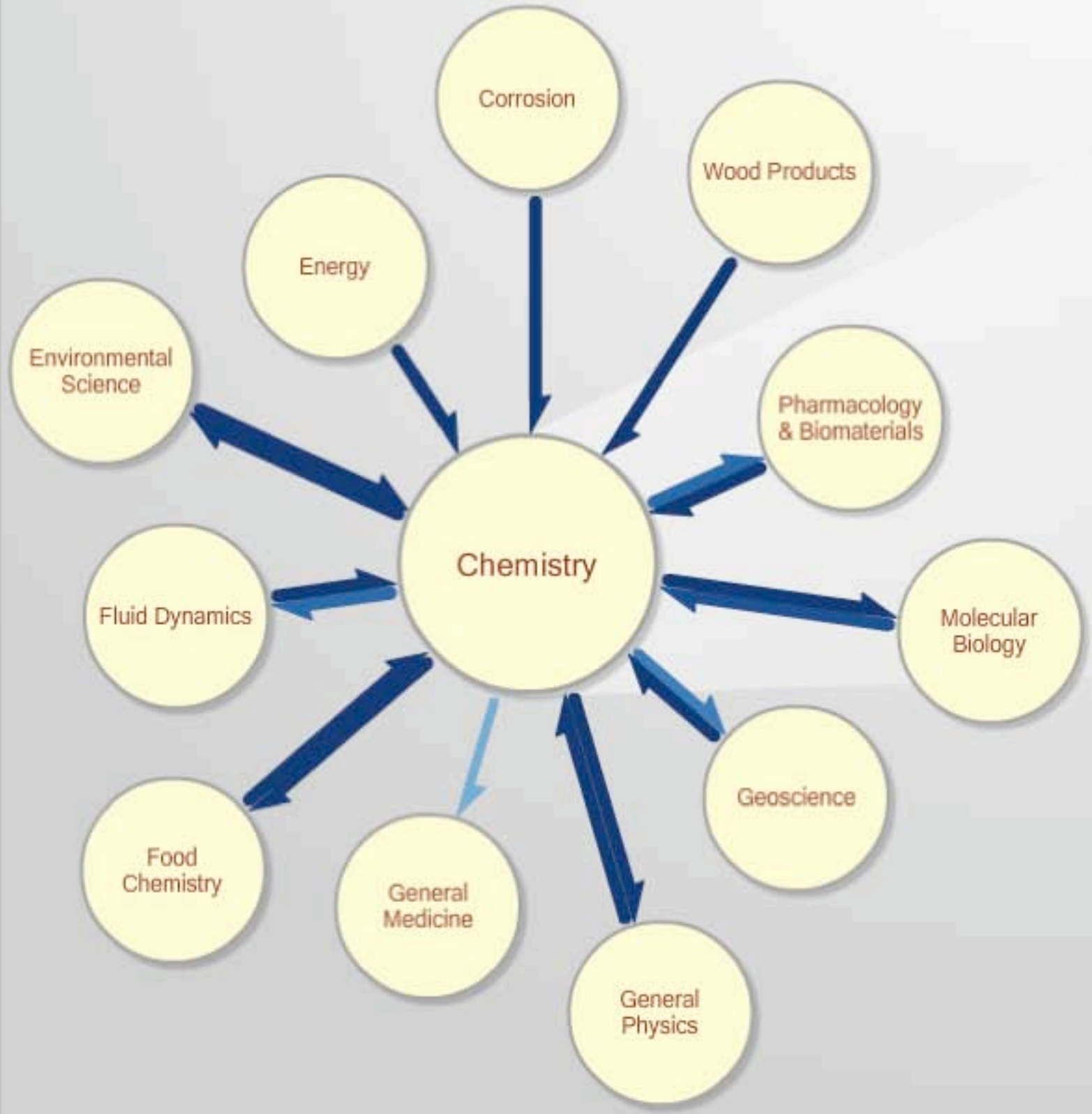
$$L(M) = q_{\curvearrowright} H(Q) + \sum_{i=1}^m p_{\circ}^i H(P^i).$$



The flow of ideas through the sciences  
Rosvall and Bergstrom (2007) PNAS







Field name  
**Chemistry**

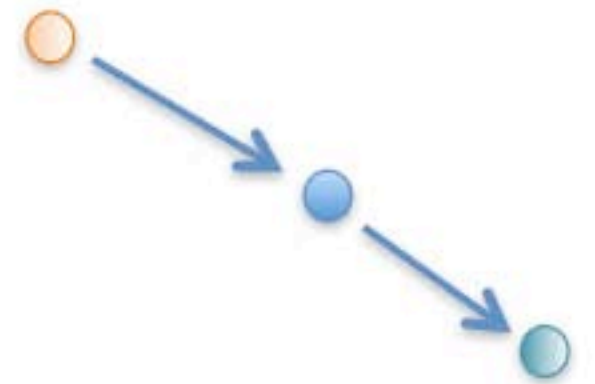
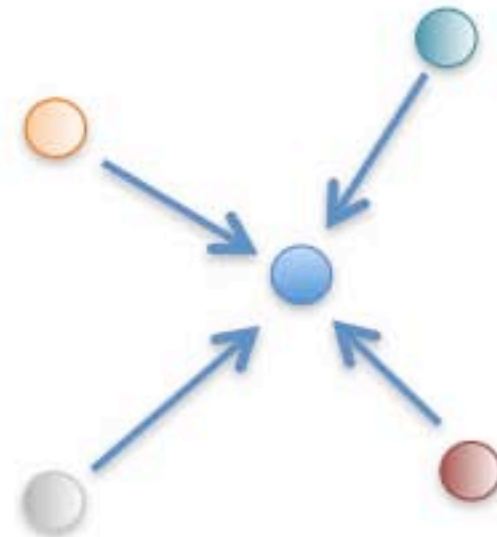
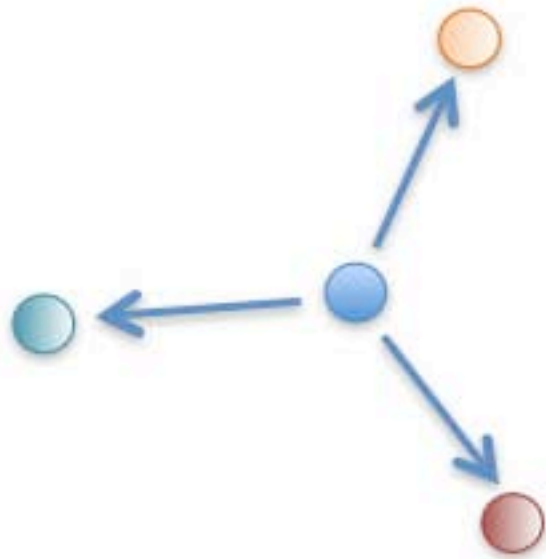
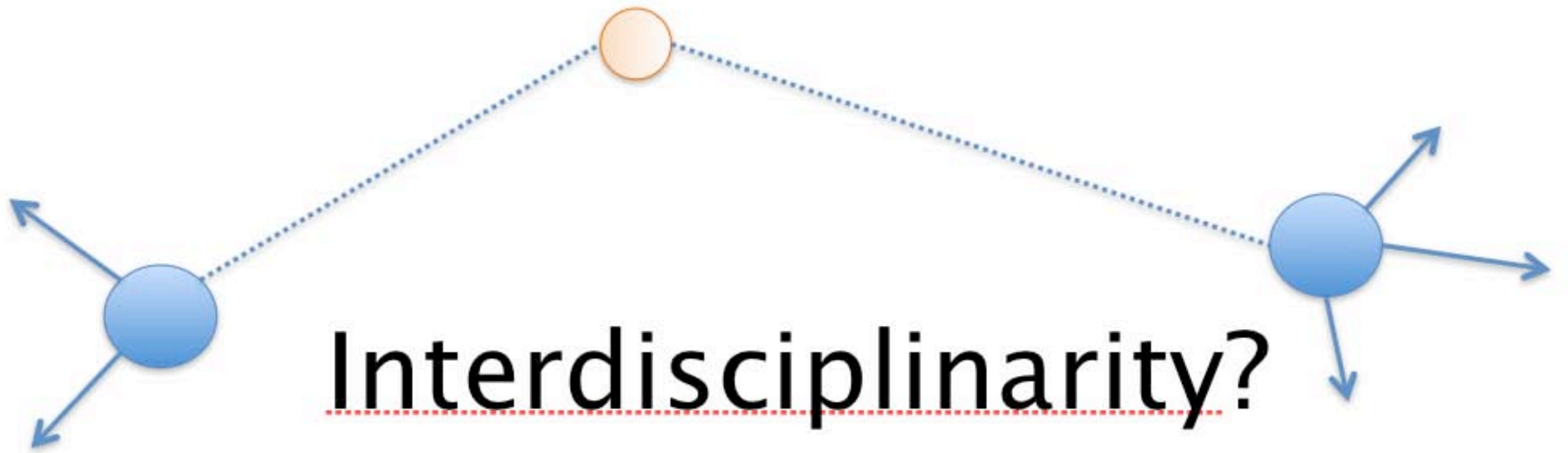
---

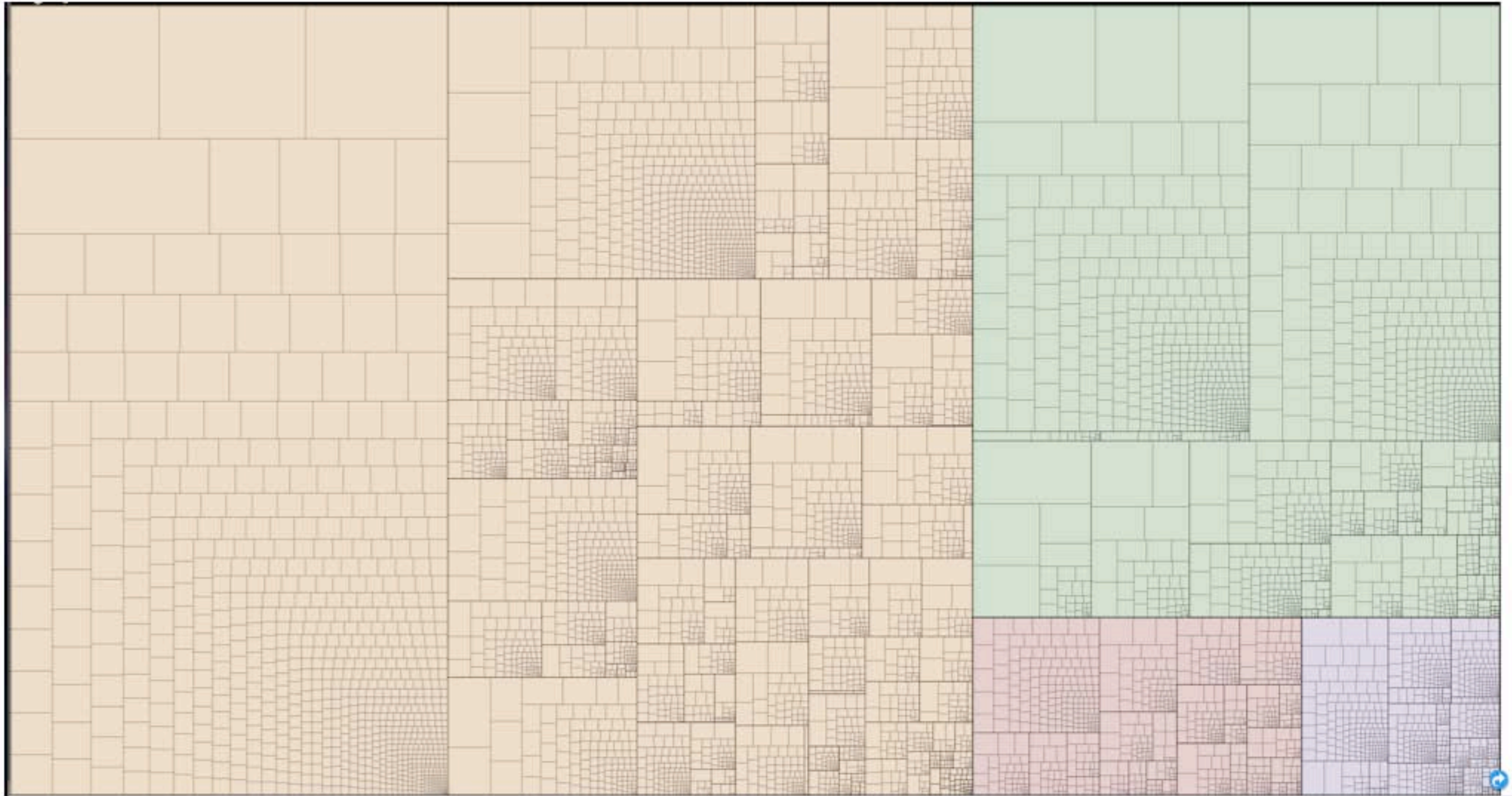
Field size  
342 journals and  
6.0 percent of all traffic

---

Highest traffic

1. J Am Chem Soc
2. J Chem Phys
3. J Phys Chem B
4. Angew Chem Int Edit
5. Langmuir
6. Macromolecules
7. Chem Commun
8. Chem Phys Lett
9. J Phys Chem A
10. J Org Chem





Moritz (2008)

# Summary

- Scholarly literature forms a vast network
- Develop tools to mine the wealth of information in this network (e.g., mapping-simplifying and highlighting the important structures)
- Ask questions (e.g., Where are the epicenters of creativity in science? Has science developed an institution





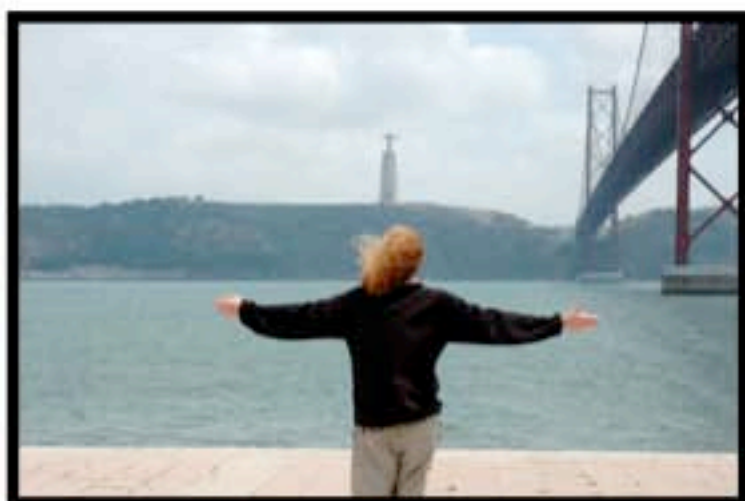
**eigenFACTOR.org**  
RANKING AND MAPPING SCIENTIFIC KNOWLEDGE



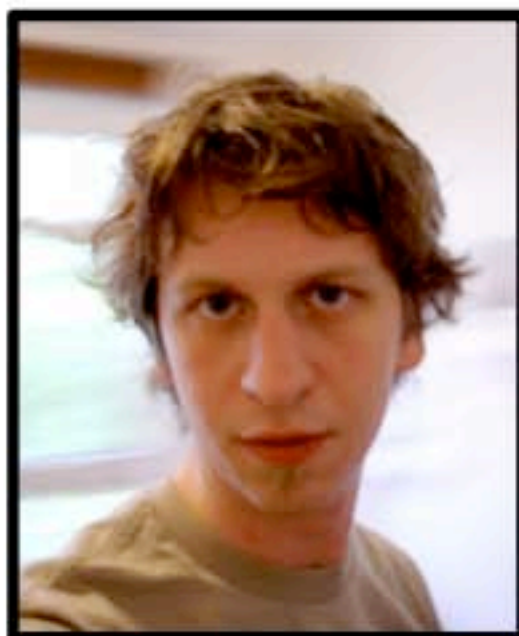
**Carl  
Bergstrom**



**Ted  
Bergstrom**



**Ben  
Althouse**



**Moritz  
Stefaner**



**Martin  
Rosvall**